

Our newest, and fourth, generation of solar charge controllers sets new standards in solar technology. For the first time a solar charge controller is offered in the market which is equipped with an integrated circuit (ASIC) specially designed for solar charging. This integrated circuit, called Atonic®, provides a charge controller with new functions. Atonic® is more than protective device for your battery, and contains the most recent and innovative technology. Overcharge protection is provided by a pulse-width-modulated shunt controller which guarantees quick and gentle charging of the battery (characteristic IV curve).

Wear-resistant MOSFET transistors are used for the overdischarge protection in this charge controllers, whereby a maintenance-free operation with an extremely long product life is ensured. Absolutely new in this price class is a cycle charging, boost charging and a temperature compensation which are regularly integrated in these charge controllers. An LED colour display gives information about voltage of the accumulator.

### Solsum Charge Controllers set new Standards in this Price and Power Class!

#### Safety Features:

- Overvoltage protection by integrated varistor
- Wrong polarity protection at Battery and Module
- Proof against operation errors
- Built-in fuse
- Electronically short circuit protected
- Voltage-display by changing colour
  - red 11,8 V
  - yellow to red-yellow 12,3 V
  - green 12,8 V
- Low voltage disconnection LVD

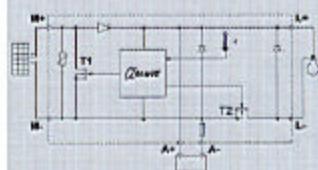
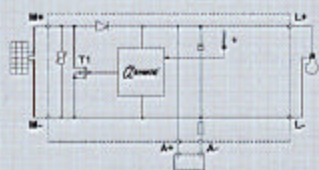
#### Charging Functions:

- Shunt regulator - fast and gentle charging
- Time-delayed overdischarge protection
- Temperature compensation by built-in sensor
- Automatic voltage adaption
- Cycle charging
- Boost charging
- Schottky diode
- MOSFET switch
- LED- display of charging function

#### Technical Data:

	Solsum 5.0	Solsum 8.0	Solsum 6.6	Solsum 8.8
Max.Charge Current at 50° C	5 A	8 A	6 A	8 A
Load Current at 50° C	without LVD	without LVD	6 A	8 A
Fuse	6.3	10	6.3	10
Connection Terminal (single/fine wire)	2,5 / 4 mm <sup>2</sup>	2,5 / 4 mm <sup>2</sup>	2,5 / 4 mm <sup>2</sup>	2,5 / 4 mm <sup>2</sup>
Weight	108 g	110 g	110 g	112 g
Protection	IP 22	IP 22	IP 22	IP 22
Dimensions	85x98x34 mm	85x98x34 mm	85x98x34 mm	85x98x34 mm
Ambient Temperature	- 25° C bis 50° C	- 25° C bis 50° C	- 25° C bis 50° C	- 25° C bis 50° C
System Voltage	12/24 V	12/24 V	12/24 V	12/24 V

For 24 V Systems voltages are to be doubled!



For a detailed description please see the Atonic data sheet.

Atonic® is a registered trademark of Steca GmbH.

\*1) Athon was an Egyptian god called: "Master of the Sun"

Solarix, Atonic, the LED colour display and the hybrid control system, G93 17 097.1 and G 93 17 338.5 are both registered under German patent and Trade Name Office.