



Inverter / Charger

Sine-i

**Sinewave Inverter
and
Battery Charger**

48Vdc / 230Vac / 2.5kVA

Model: APLS-DSP-2000-48



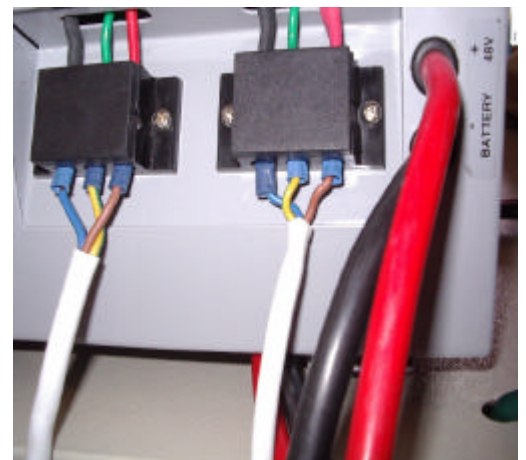
Rear View

Mains Circuit Breaker * Bypass Switch * Mains Input
Terminals * 230Vac Output Terminals * Battery Leads



Side View

Large Battery Trolley (4 x 105Ah Batteries) with
Twin 50A Fuse Isolator



A powerful mains power backup system with DSP controlled pure sinewave inverter and
5-stage battery charger